

TABLE OF CONTENTS

1. DESCRIPTION	2
2. ENVIRONNEMENT	2
3. FUNCTIONNALITIES.....	3
3.1. LAUNCH THE « DLSLAVED » DAEMON	3
3.2. STOP THE PROGRAM	3
3.3. ALGORITHMICS	4
3.4. PROCESS DESCRIPTION	5

1. DESCRIPTION

This document allows you to understand and configure the « **dlslaved** » daemon to make a MySQL delayed slave replication.

2. ENVIRONNEMENT

The « **dlslaved** » daemon was developed with GNU gcc C compiler under Linux and can be tested and compiled under Linux and Solaris 10 (x86 and SPARC).

You must install MySQL 5 in `/usr/local/mysql` directory in order to use headers and libraries correctly.

You can compile the program using a standard `Makefile` and by typing :

```
shell# make
```

You can compile a `DEBUG` program by typing :

```
shell# DEBUG="-D _DEBUG" make
```

3. FUNCTIONNALITIES

3.1. LAUNCH THE « DLSLAVED » DAEMON

To launch the « **dslaved** » daemon, you must type :

```
shell# ./dslaved -h (address) -u (user) -p (password) -P  
(port)
```

- **address** : IP address of the replication server (could be the same IP address as the master if you use multiple instance of MySQL daemon),
- **user** : the user who have the replication rights,
- **password** : the user password,
- **port** : port number of the replication instance (default MySQL is 3306, so use 3307 or another value).

Command line example :

```
shell# ./dslaved -h 192.6.1.98 -u root -p passwd -P 3307
```

When the « **dslaved** » daemon is launched, it creates a `dslaved.lock` file in `/tmp` directory. This file contains the process identifier (pid) or the “**dslaved**” daemon.

In `DEBUG` mode, another file named `dslaved.log` is created in the `/tmp` directory. It contains debugs information about the execution process.

3.2. STOP THE PROGRAM

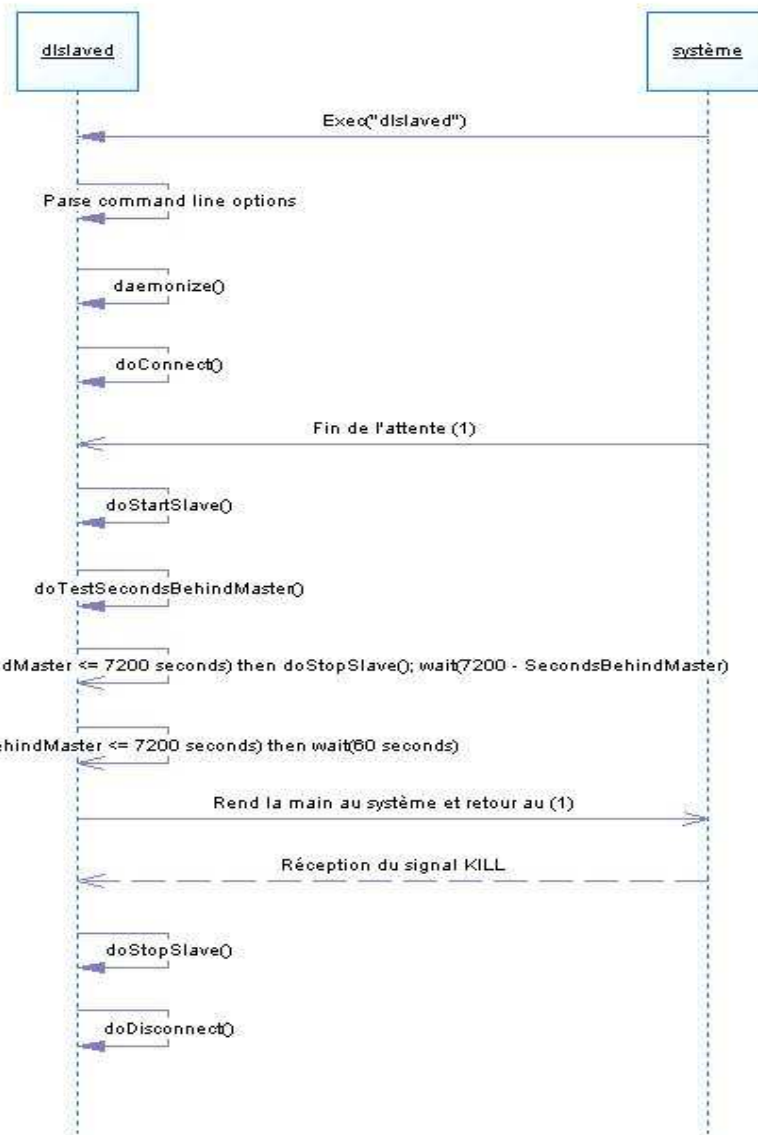
To kill the « **dslaved** » daemon, you must type :

```
shell# pkill dslaved
```

This command line killed **all** instances of the « **dslaved** » daemon.

3.3. ALGORITHMICS

sd:algorithmique



3.4. PROCESS DESCRIPTION

dslaved (Delayed Slave Daemon) Process design

